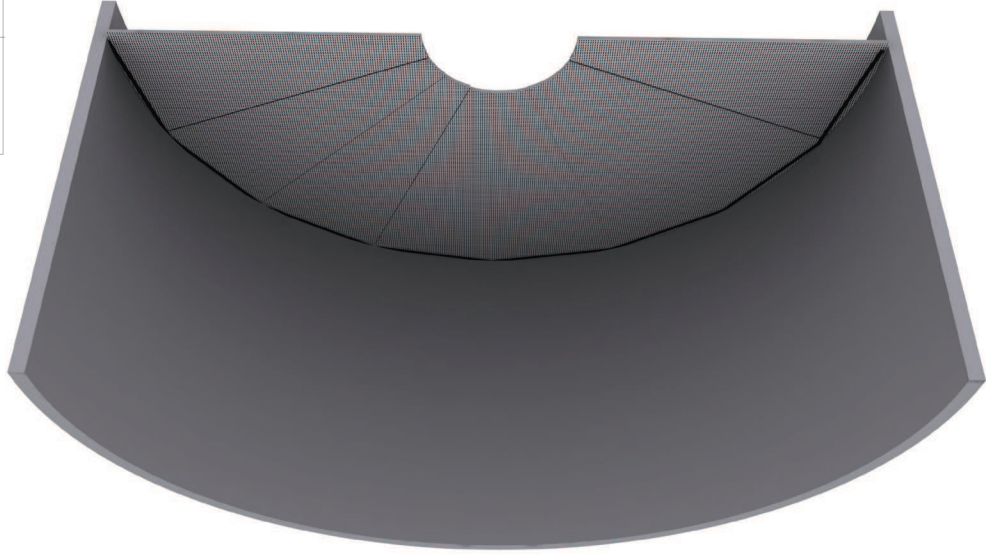
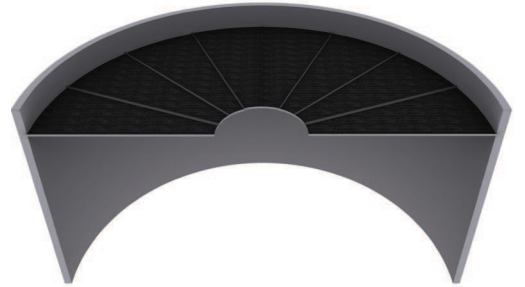


TRAPEZ



Hammede	Galvanize çelik, Paslanmaz çelik, Alüminyum
Boyutlar	En: 200-1200 mm Boy: max. 2000 mm
Perforasyon	Ø0.7, Ø1.5, Ø1.8, Ø2.5, Ø3, Ø4.5, Ø6, Ø7, Ø16, 8x8, Random
Akustik	NRC 0,70 (Ø2.5mm %16 boşluk oranı)
Yangın	Yangın tepki sınıfı A2-s1,d0.
Material	Galvanized Steel, Stainless Steel, Aluminium
Dimension	Width: 200-1200 mm Length: 2000 mm(max.)
Standard Perforation	Ø0.7, Ø1.5, Ø1.8, Ø2.5, Ø3, Ø4.5, Ø6, Ø7, Ø16, 8x8, Random
Acoustics	NRC: 0,70(Ø2.5mm %16 open area)
Fire	Reaction to Fire Class A2-s1,d0.



**Sistem Görünüşü**

