**DL x DC - av x sp**

DL = Horizontal Width

DC = Vertical Width

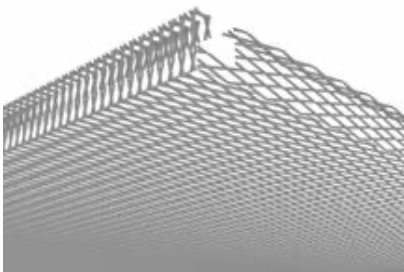
av = Strand Width

sp = Material Thickness

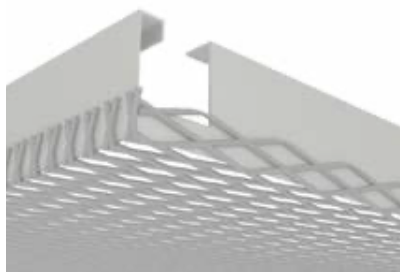
R: Diamond-Shaped Mesh Type

Q: Rhombus Mesh Type

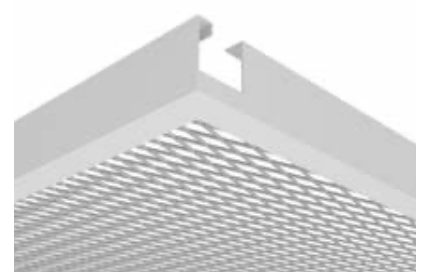
E: Hexagonal Mesh Type

TYPE A

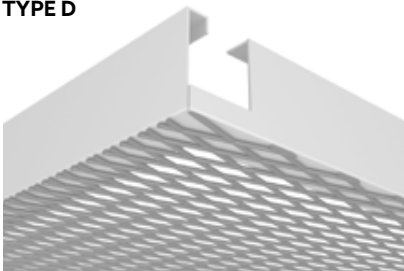
This type is when expanded panels themselves are bent without the use of any profile.

TYPE B

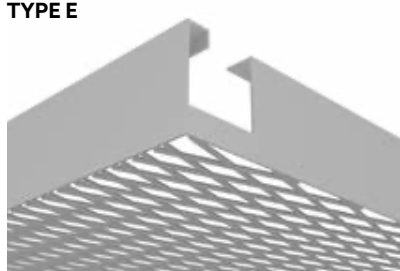
This type is when edge profiles are welded onto the bent edges of the expanded plate from inside.

TYPE C

This type is when frame, which is made from one piece cut-out plank panel, is welded onto the expanded plate from below.

TYPE D

This type is when frame, which is made from one piece cut-out plank panel, is welded onto the expanded plate from above.

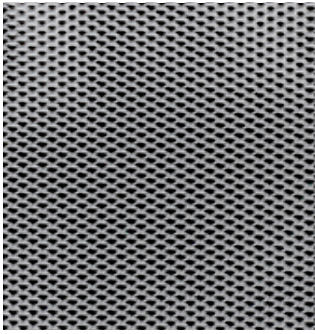
TYPE E

This type is when frame is welded on the expanded panel from the edges. Expanded which is made from plate and frame does not have any bent edges.

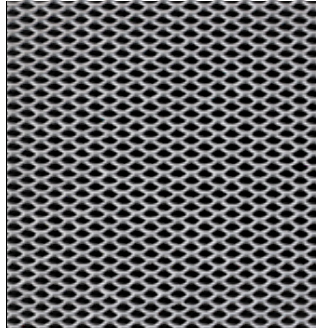
Raw materials can be galvanized steel and aluminium.

Pictures represent hook-on panels.

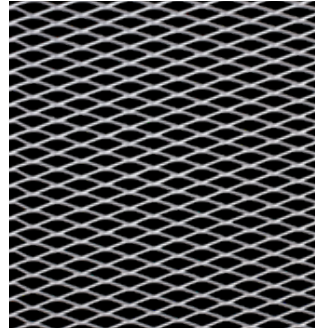
UNFLATTENED MESH TYPES



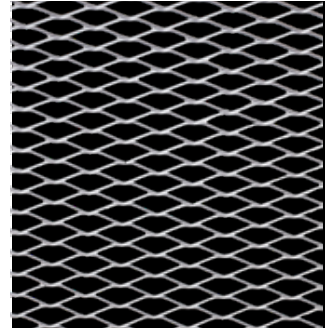
MESH R12x6



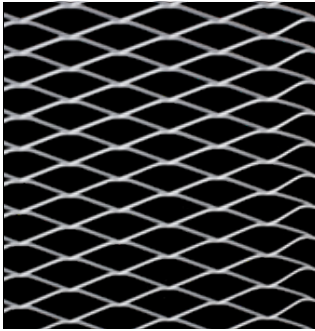
MESH R16x8



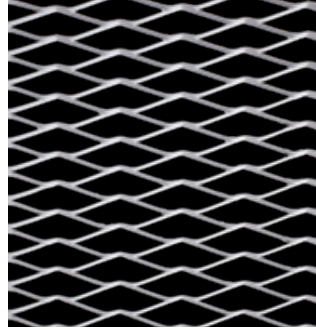
MESH R30x10



MESH R42x13

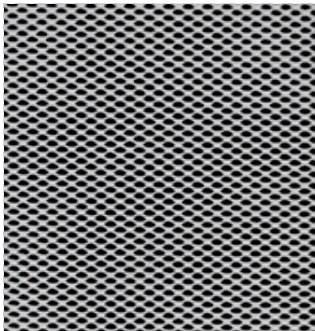


MESH R60x20

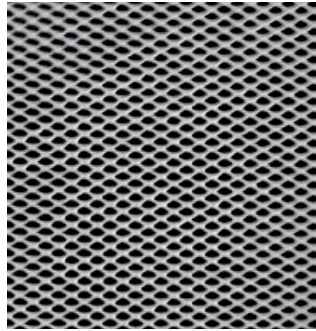


MESH R75x20

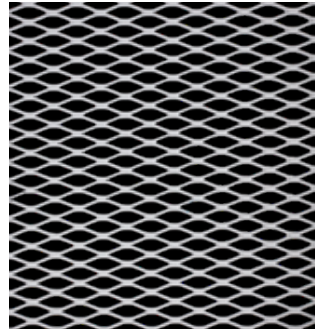
FLATTENED MESH TYPES



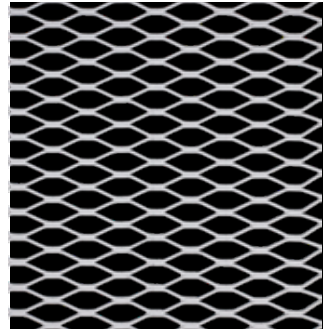
MESH R12x6



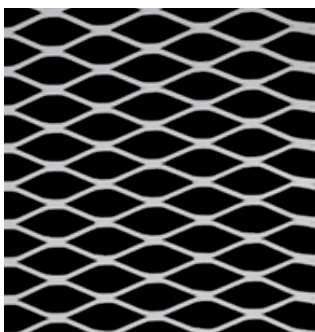
MESH R16x8



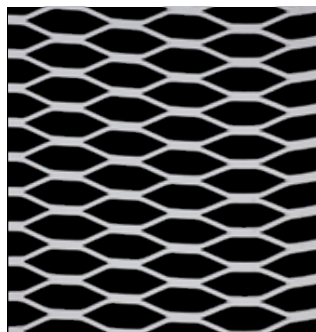
MESH R30x10



MESH R42x13



MESH R60x20



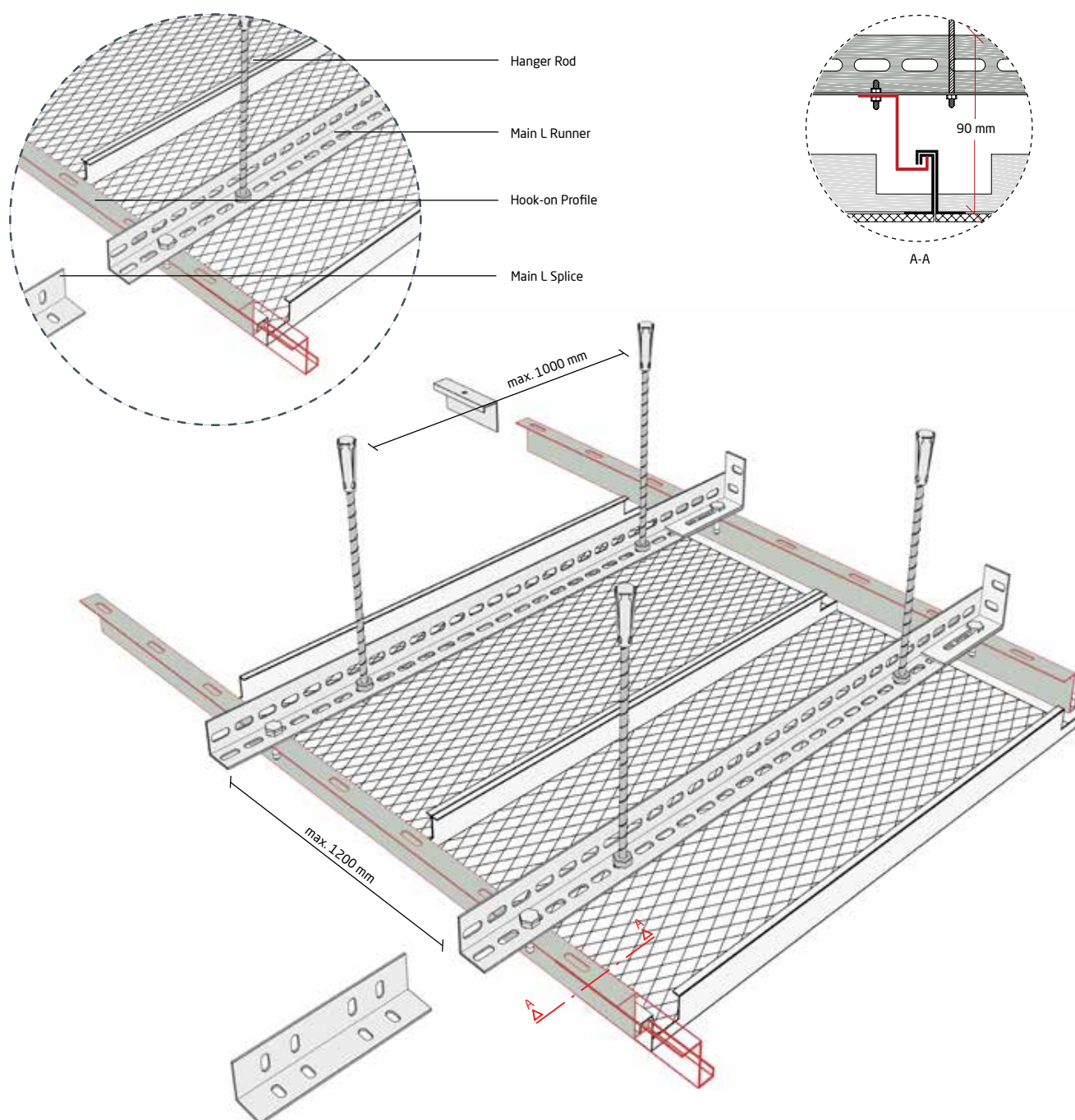
MESH R75x20

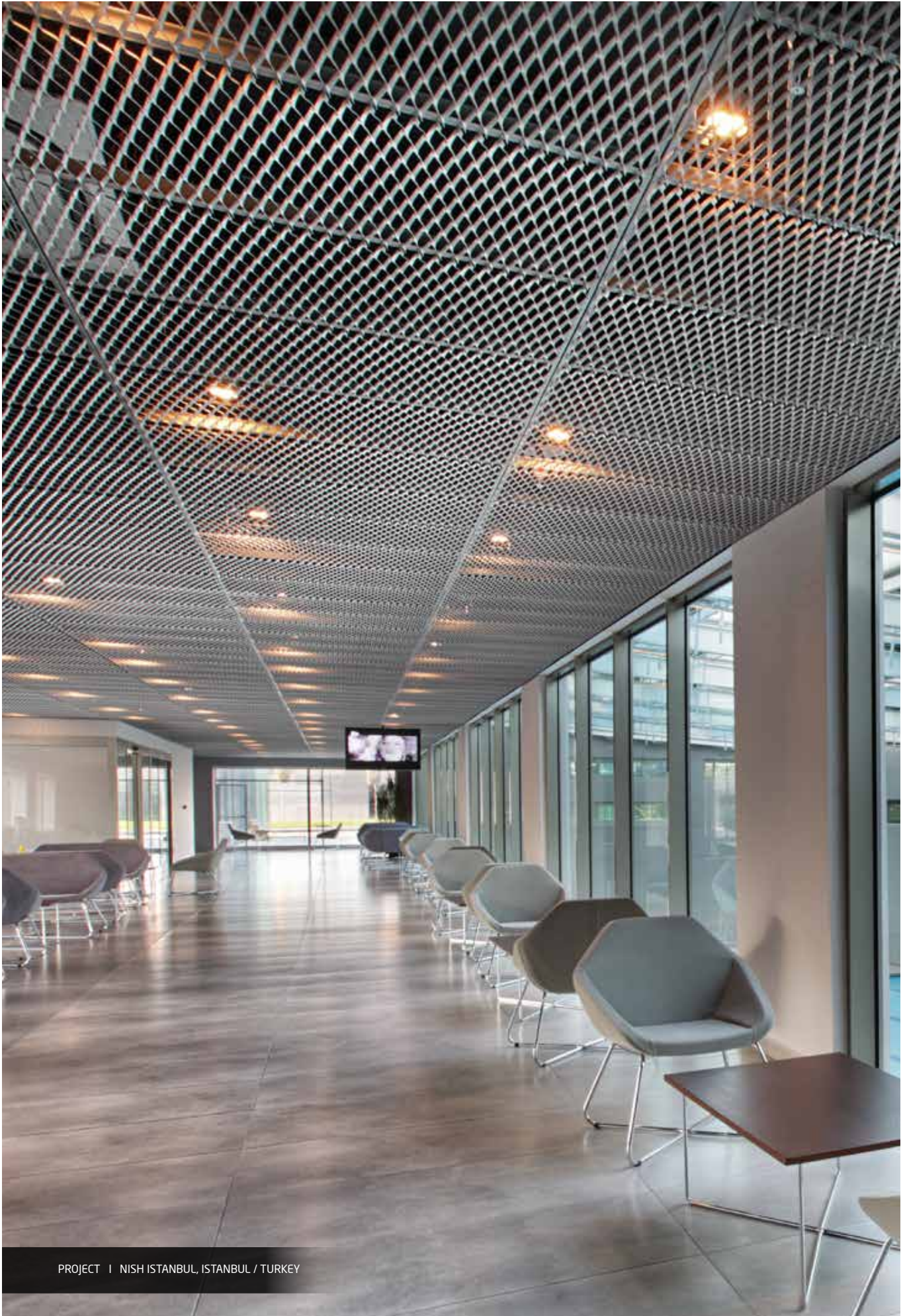
FOR OTHER MESH AND OPEN AREA OPTIONS,
PLEASE CONTACT ASPEN HEAD OFFICE.

INFORMATION

Integra Expanded Hook-on System offers a monolithic appearance thanks to the use of concealed hook-on profiles. Integra Hook-On panels can be demounted easily without the need for any tool.

SYSTEM COMPONENTS





PROJECT | NISH ISTANBUL, ISTANBUL / TURKEY