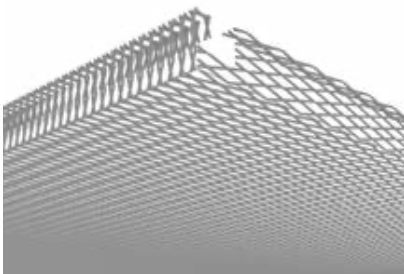


**DL x DC - av x sp**

DL = Horizontal Width  
 DC = Vertical Width  
 av = Strand Width  
 sp = Material Thickness

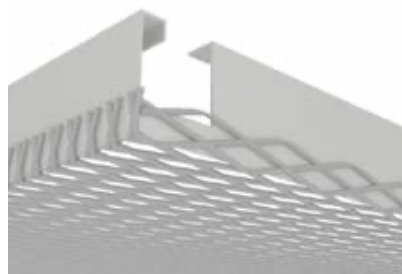
R: Diamond-Shaped Mesh Type  
 Q: Rhombus Mesh Type  
 E: Hexagonal Mesh Type

**TYPE A**



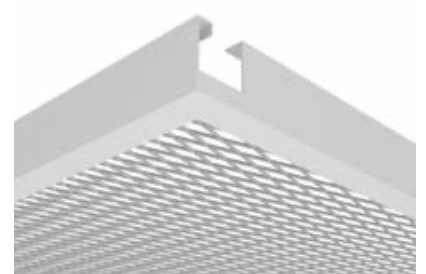
This type is when expanded panels themselves are bent without the use of any profile.

**TYPE B**



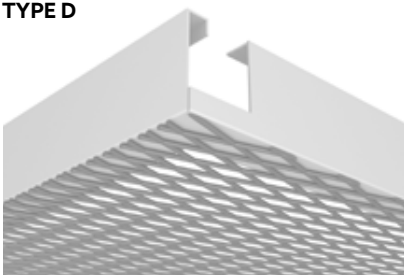
This type is when edge profiles are welded onto the bent edges of the expanded plate from inside.

**TYPE C**



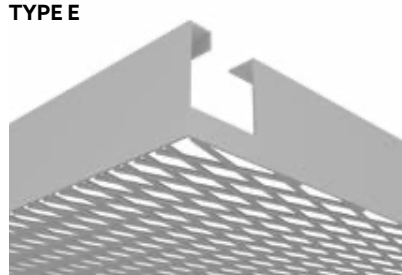
This type is when frame, which is made from one piece cut-out plank panel, is welded onto the expanded plate from below.

**TYPE D**



This type is when frame, which is made from one piece cut-out plank panel, is welded onto the expanded plate from above.

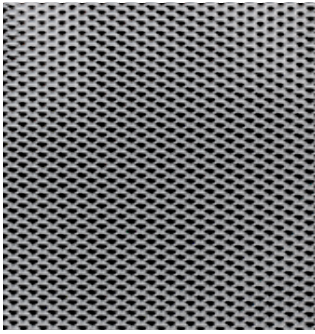
**TYPE E**



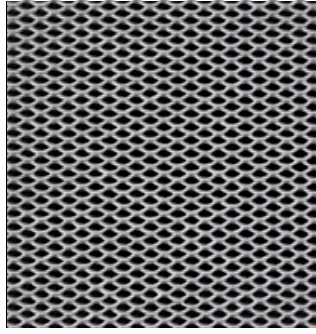
This type is when frame is welded on the expanded panel from the edges. Expanded which is made from plate and frame does not have any bent edges.

Raw materials can be galvanized steel and aluminium.  
 Pictures represent hook-on panels.

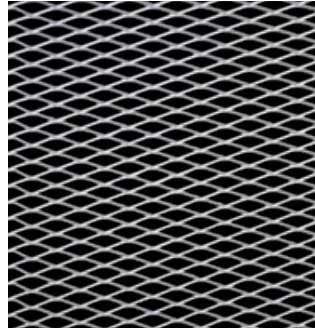
**UNFLATTENED MESH TYPES**



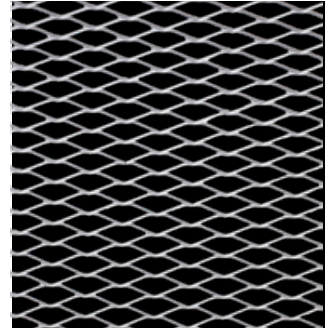
**MESH R12x6**



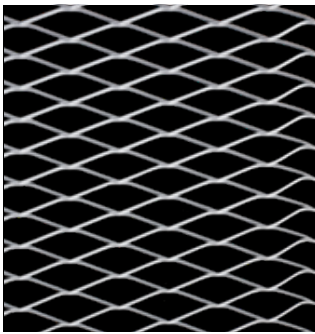
**MESH R16x8**



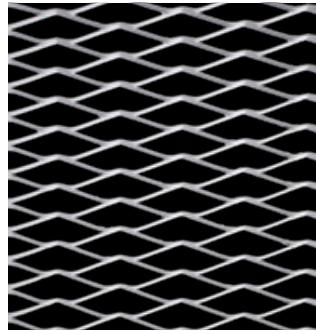
**MESH R30x10**



**MESH R42x13**

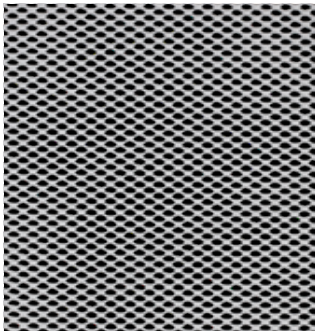


**MESH R60x20**

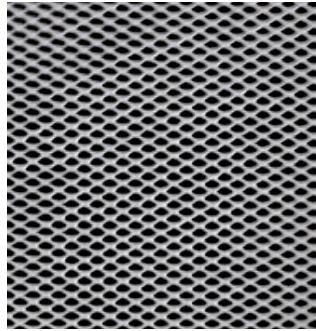


**MESH R75x20**

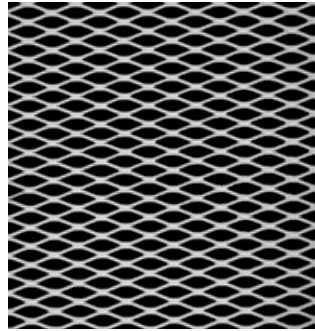
**FLATTENED MESH TYPES**



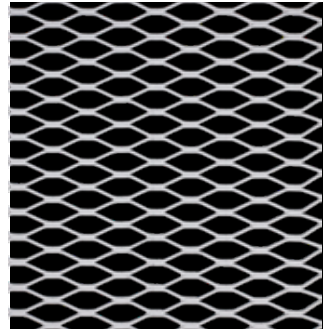
**MESH R12x6**



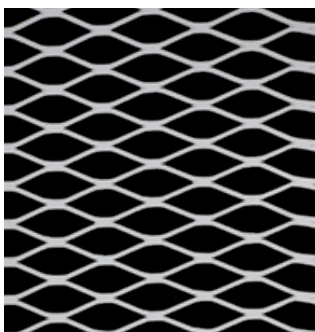
**MESH R16x8**



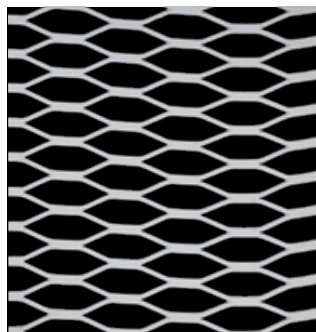
**MESH R30x10**



**MESH R42x13**



**MESH R60x20**



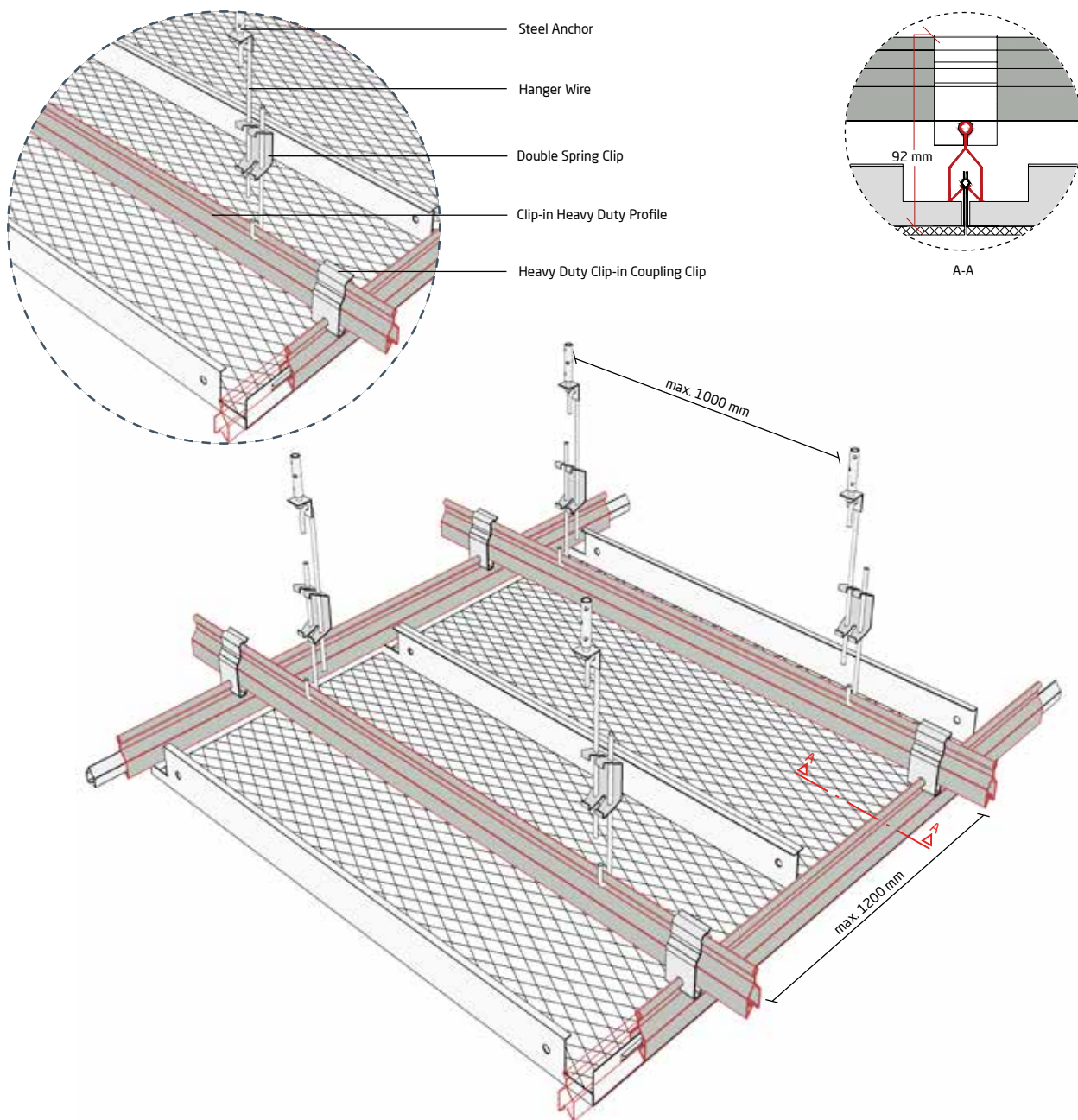
**MESH R75x20**

**FOR OTHER MESH AND OPEN AREA OPTIONS,  
PLEASE CONTACT ASPEN HEAD OFFICE.**

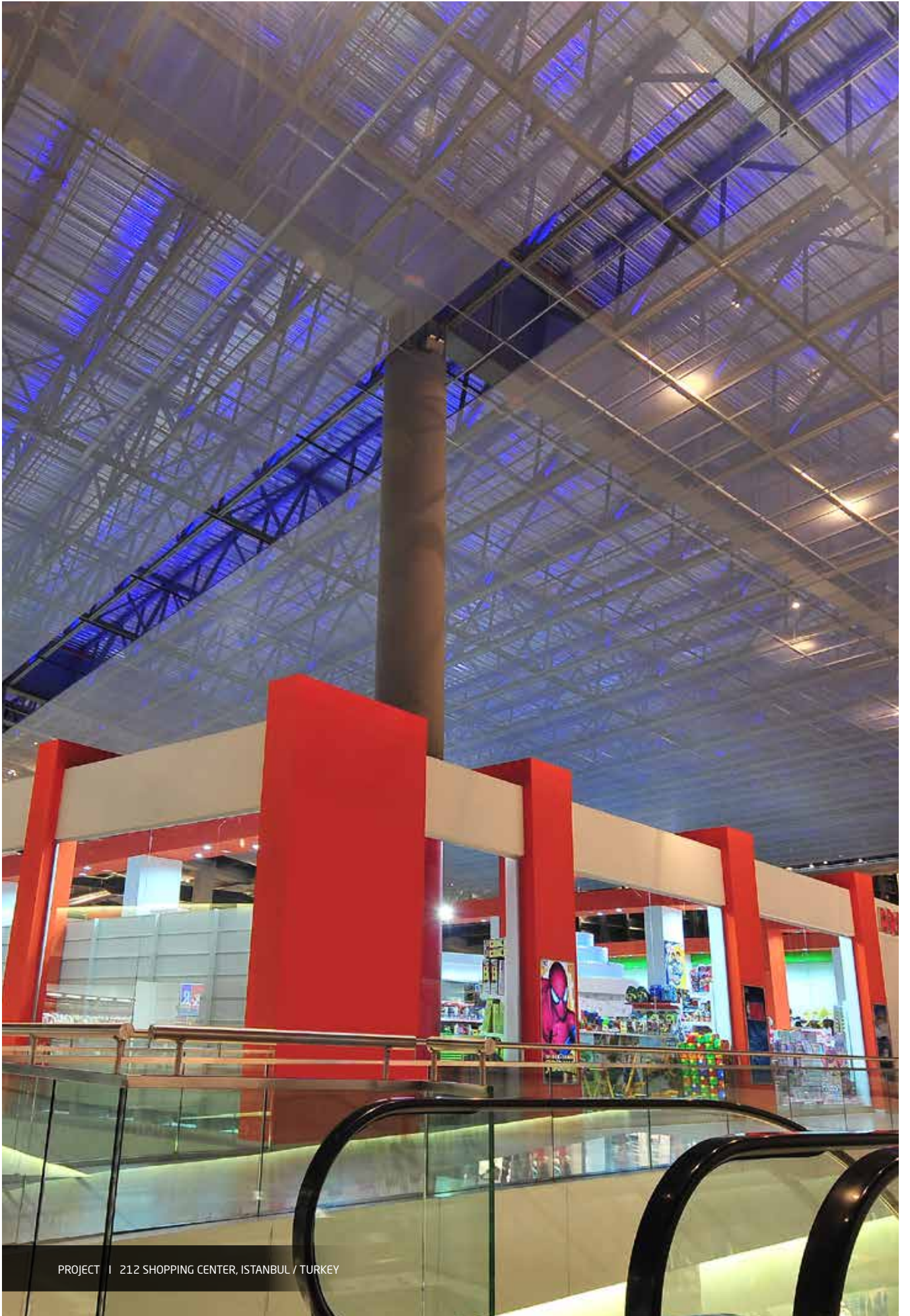
**INFORMATION**

Integra Expanded Clip-in Panels are the types of ceilings produced by specialized techniques. The panels can be manufactured in different sized with various surface alternatives. These systems offer aesthetics and functional design options for interior designers and architects. Integra Expanded Clip-in System involves the use of Clip-in profiles to hang the panels.

**SYSTEM COMPONENTS**







PROJECT | 212 SHOPPING CENTER, ISTANBUL / TURKEY