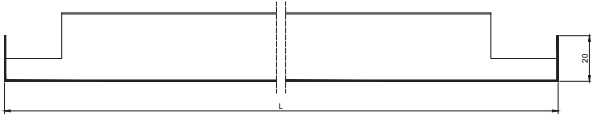


Lay-in Koridor

Integra Plank Lay-in Koridor plakaları farklı de-
tay ve ölçüdeki koridorlar için ideal çözüm sun-
mak üzere tasarlanmıştır. Mekan boyutuna uygun
ebatlandırılabilen Lay-in Koridor plakaları mekan
boyutlarına göre üretim avantajıyla uygulamada
malzeme firesini minimuma indirmektedir. Plaka ve
koridor ebadı göz önünde bulundurularak döşenen
paneller kolaylıkla demonte edilebilme özelliğine
sahiptir.

Standart Panel / Standard Panel**Panel Tanımı**

Hammadde: Galvanize çelik, Paslanmaz çelik,
Alüminyum.

Kenar özelliği: Küt

En: 200-1200 mm

Boy: 200-3000mm

Boya: RAL 9006, RAL 9010, RAL 9016

- . İsteğe bağlı olarak tüm RAL renklerinde üretim yapılabilir.
- . Özellikle hijyen gerektiren alanlar için anti bakteriyel boya seçeneği mevcuttur.
- . İstenildiğinde ahşap görünlü paneller üretilebilir.
- . Daha fazla bilgi için bkz. **Renk ve Desen**

Perforasyon: Ø0.7, Ø1.5, Ø1.8, Ø2.5, Ø3, Ø4.5, Ø6,
Ø7, Ø16, 8x8, Random
Daha fazla bilgi için bkz. **Perforasyon**

Akustik: NRC 0,70(Ø2.5mm %16 boşluk oranı)
Daha fazla bilgi için bkz. **Akustik**

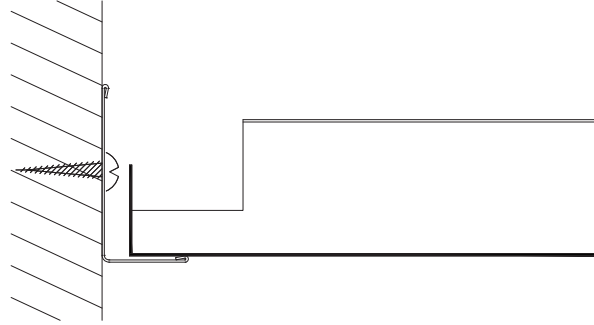
Yangın: Yangın tepki sınıfı A2-s1,d0.
Daha fazla bilgi için bkz. **Standartlar**

Teknik Standartlar:

- . Taşıyıcı sistem ile desteklenen paneller, ISO9001:2008, TSE ve **CE** belgeli tesisimizde Avrupa, Amerika ve TAIM (Technical Association of Industrial Metal Ceiling Manufacturers) standartlarına uygun olarak imal edilmektedir.
- . Malzemenin yangın tepki sınıfı, uluslar arası akredite edilmiş test kuruluşlarında yaptırılmış yangın testi ile EN 13501-1 standardı uyarınca yapılan sınıflandırma sonucu A2-s1,d0 olarak belgelenmiştir.

Lay-in Corridor

Integra Plank Lay-in Corridor panels are designed to offer the ideal solution for corridors where sizes need to be produced according to specific dimensions of each area the Lay-in Corridor system minimizes material loss during installation. Lay-in Corridor panels can also be easily demounted without the need for tools.

Standart Birleşim / Standard Connection**Panel Description**

Raw material: Galvanized Steel, Stainless Steel, Aluminium.

Edge Option: Square

Width: 200-1200 mm

Length: 200-3000mm

Colour: RAL9006, RAL9010, RAL9016

- . Production is possible in all other RAL colours upon request.
- . Antibacterial paint option is available upon request, especially for areas with hygiene requirements.
- . Panels with wood appearance can be produced if requested.
- . For detailed information please see **Colours and Design**.

Perforation: Ø0.7, Ø1.5, Ø1.8, Ø2.5, Ø3, Ø4.5, Ø6,
Ø7, Ø16, 8x8, Random
For detailed information please see **Perforation**.

Acoustics: NRC: 0,70(Ø2.5mm %16 open area)
For detailed information please see **Acoustics**.

Fire: Reaction to Fire Class A2-s1,d0.
For detailed information please see **Standards**.

Technical Standards:

- . Ceiling panels supported by a suspension system manufactured in accordance with European, American and TAIM (Technical Association of Industrial Metal Ceiling Manufacturers) standards in our factory that have ISO9001:2008, TSE ve **CE** certificates.
- . Panels are tested in accordance with EN 13501-1 and must be designed to comply with Euroclass A2-s1, d0

METAL CEILING SPECIFICATION

... x ... mm Sized Flat Lay-in Standard System

General Description:

Aluminium /Stainless Steel/ Galvanised Steel ceiling panels supported by T-24 suspension system manufactured in accordance with European, American and (Technical Association of Industrial Metal Ceiling Manufacturers) standards by a manufacturer that have ISO9001:2008, TSE ve CE certificates.

Ceilings are tested in accordance with EN 13501-1 and must be designed to comply with at least Euroclass A2-s1, d0

Panel Description:

- Raw material** : Ceiling panels manufactured from ... mm Aluminium /Stainless Steel/ Galvanised Steel
Colour : Ceiling panels coated electrostatically applied powder coating coloured RAL ...
 (min. 40 μ thickness and approx. %20 Gloss Rate)
Acoustical inlay : Ceiling panels are manufactured with 0,2 mm thickness, black acoustical inlay
 (Royalin/Soundtex) to achieve sound absorption $\alpha_w = \dots$ for $\varnothing \dots$ mm Perforation
 (%.. open area)
Perforation : Ceiling panels are perforated $\varnothing \dots$ mm (% ... open area) and plain borders are ... mm.
Edge : Square

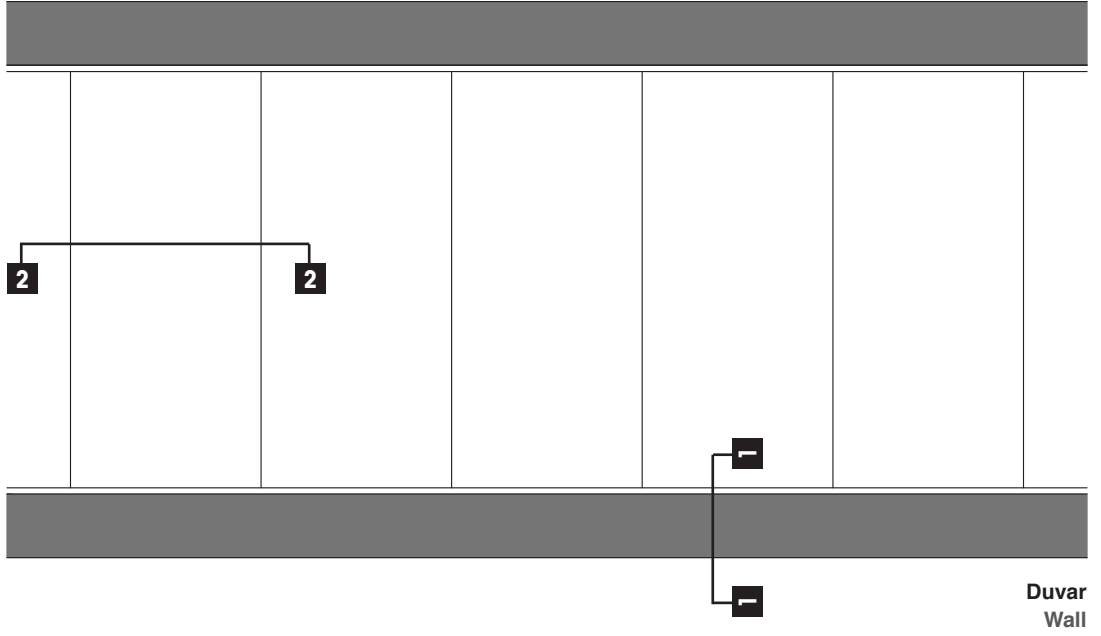
Installation:

L Wall Angle (4) (C Wall Angle) should be used for lateral sides facing inwards of the gypsum pool. Lighting, sprinkler or vent places should be cutted out and the components should be mounted according to the project after the installation. In the case of these components come up to suspension system accessories, installation should be continued with mounting suspension system accesories one before and one after the components.

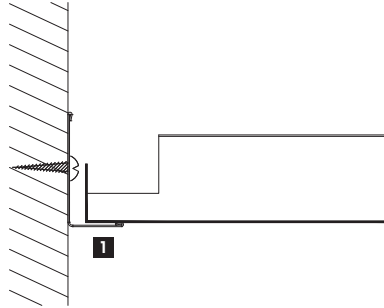
Suspension System:

- 1- WL 3000** : L-Wall Angle, 3000 mm length, 0,6 mm thickness, pre-painted galvanised steel
2- VDS-60 : $\varnothing 6$ mm Bolt/Nut/Washer

PANEL BAĞLANTI DETAYLARI
PANEL CONNECTION DETAILS



1-1 Kesiti / Section 1-1



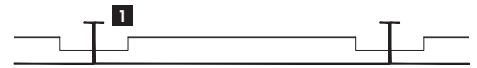
Duvar - Panel Birleşimi

1 L Köşebent

Wall - Panel Connection

1 L Wall Angle

2-2 Kesiti / Section 2-2



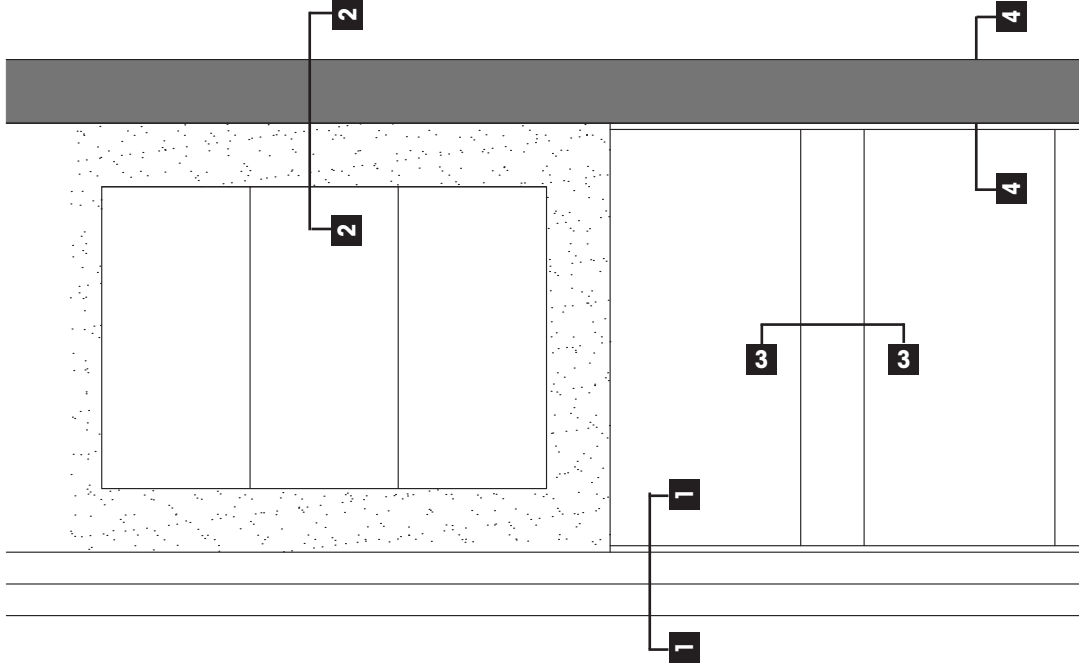
Panel Birleşimi

1 L Köşebent

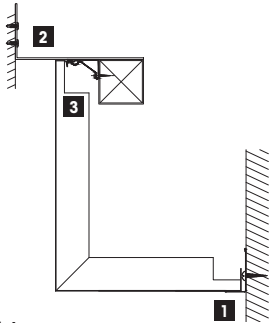
Connection of Panels

1 L Wall Angle

METAL VE DİĞER TAVANLARIN BİRLEŞİM DETAYLARI
METAL AND OTHER CEILINGS CONNECTION DETAILS



1-1 Kesiti / Section 1-1



Alternatif 1

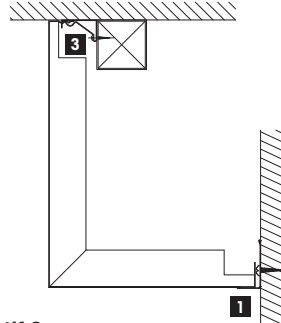
Yarım Clip-in Profil ile Alın Panel Bitişi

- 1 L Köşebent
- 2 Duvar Bağlantı Pabucu
- 3 Yarım Clip-in Profil

Alternative 1

L Panel Finish with Half Clip-in Profile

- 1 L Wall Angle
- 2 Wall Anchor
- 3 Half Clip-in Profile



Alternatif 2

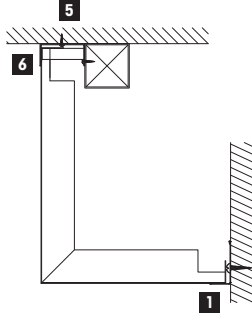
Yarım Clip-in Profil ile Alın Panel Bitişi

- 1 L Köşebent
- 3 Yarım Clip-in Profil

Alternative 2

L Panel Finish with Half Clip-in Profile

- 1 L Wall Angle
- 3 Half Clip-in Profile



Alternatif 3

C Köşebent ile Alın Panel Bitişi

1 L Köşebent

5 C Köşebent

6 Kenar Takozu

Alternative 3

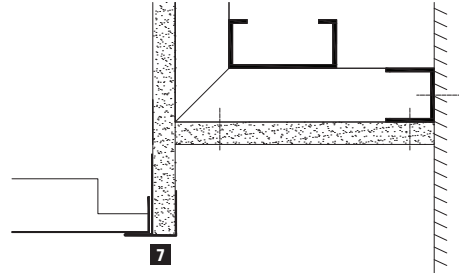
L Panel Finish with C Wall Angle

1 L Wall Angle

5 C Wall Angle

6 Wedge Clip

2-2 Kesiti / Section 2-2



Alternatif 1

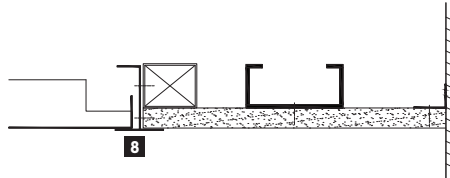
F Profil ile Alçıpan-Metal Tavan Birleşimi

7 F Profil

Alternative 1

Joint to a Gypsum Board with F Profile

7 F Profile



Alternatif 2

H Profil ile Alçıpan - Metal Tavan Birleşimi

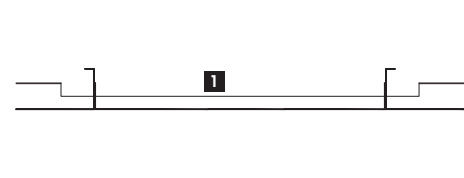
8 H Profil

Alternative 2

Joint to a Gypsum Board with H Profile

8 H Profile

3-3 Kesiti / Section 3-3



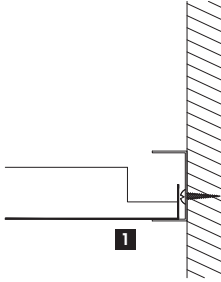
Kapama Paneli - Metal Tavan Birleşimi

1 L Köşebent

Joint to Metal Ceiling with Covering Panel

1 L Wall Angle

4-4 Kesiti / Section 4-4



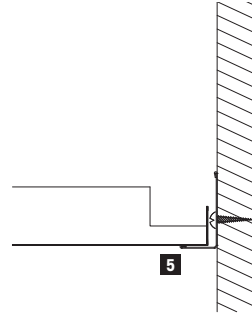
Alternatif 1

L Köşebent ile Tam Plaka Duvar Bitişi

1 L Köşebent

Full Panel Finish with L Wall Angle

1 L Wall Angle



Alternatif 2

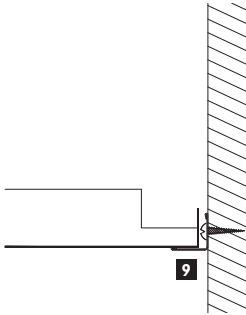
C Köşebent ile Tam Plaka Duvar Bitişi

5 C Köşebent

Alternative 2

Full Panel Finish with C Wall Angle

5 C Wall Angle



Alternatif 3

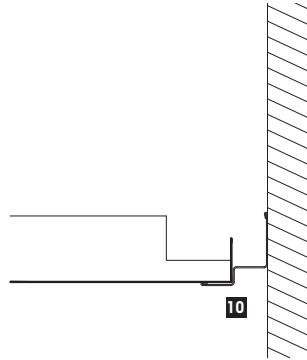
Grıda L Köşebent ile Tam Plaka Duvar Bitişi

9 Grıda L Köşebent

Alternative 3

Full Panel Finish with Grıda L Wall Angle

9 Grıda L Wall Angle



Alternatif 4

Basamaklı Köşebent ile Duvar Bitişi

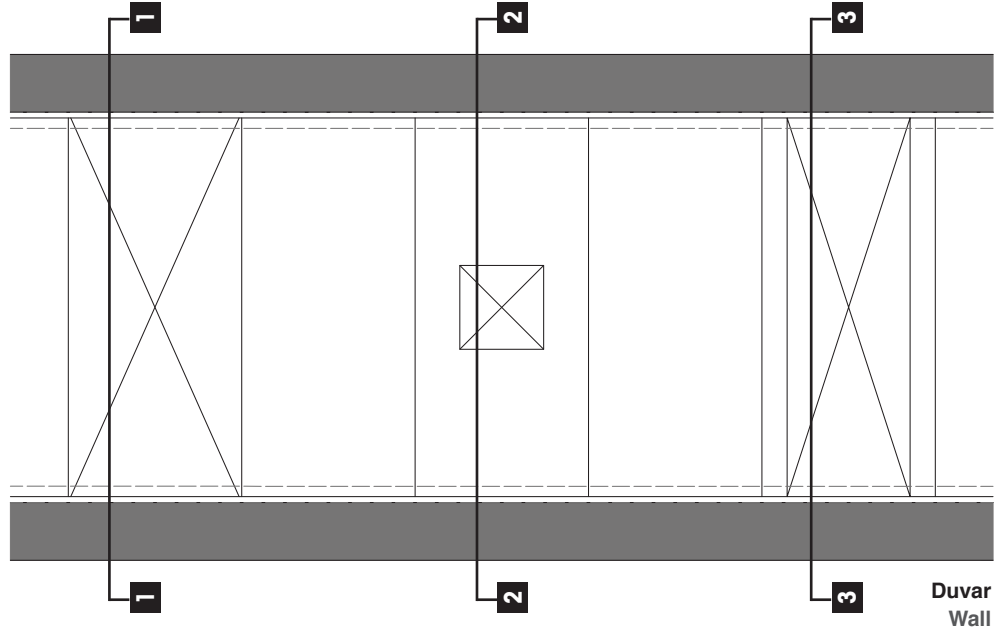
10 Basamaklı Köşebent

Alternative 4

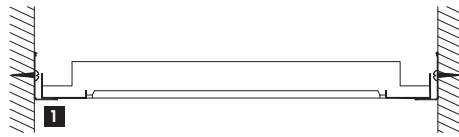
Wall Connection with Z Wall Angle

10 Z Wall Angle

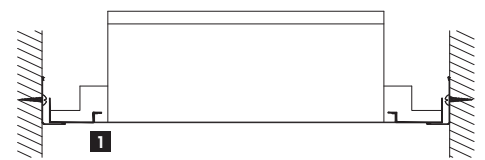
CUTOUT YAPILMIŞ PANEL DETAYLARI
DETAILS OF PANELS WITH CUT-OUT



1-1 Kesiti / Section 1-1



2-2 Kesiti / Section 2-2



Cut-out Yapılmış Tavan Paneli

1 L Köşebent

Ceiling Panel with Cut-out

1 L Wall Angle

Cut-out Yapılmış Tavan Paneli

1 L Köşebent

Ceiling Panel with Cut-out

1 L Wall Angle

3-3 Kesiti / Section 3-3

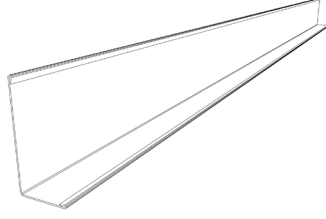


Cut-out Yapılmış Tavan Paneli

1 L Köşebent

Ceiling Panel with Cut-out

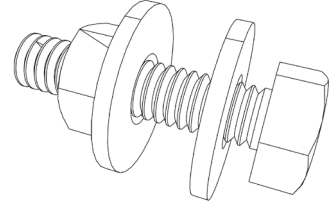
1 L Wall Angle



01

WL 3000	
Ürün Adı	L Köşebent 20x40x3000x0,5
Özellik / Malzeme	Galvanize Çelik 0,6 mm

WL 3000	
Product Reference	L Wall Angle 20x40x3000x0,5
Specification / Material	Galvanized Steel 0,6 mm



02

VDS-60	
Ürün Adı	Vida/Somun/Rondela Ø6
Özellik / Malzeme	

VDS-60	
Product Reference	Bolt/Nut/Washer Ø6
Specification / Material	